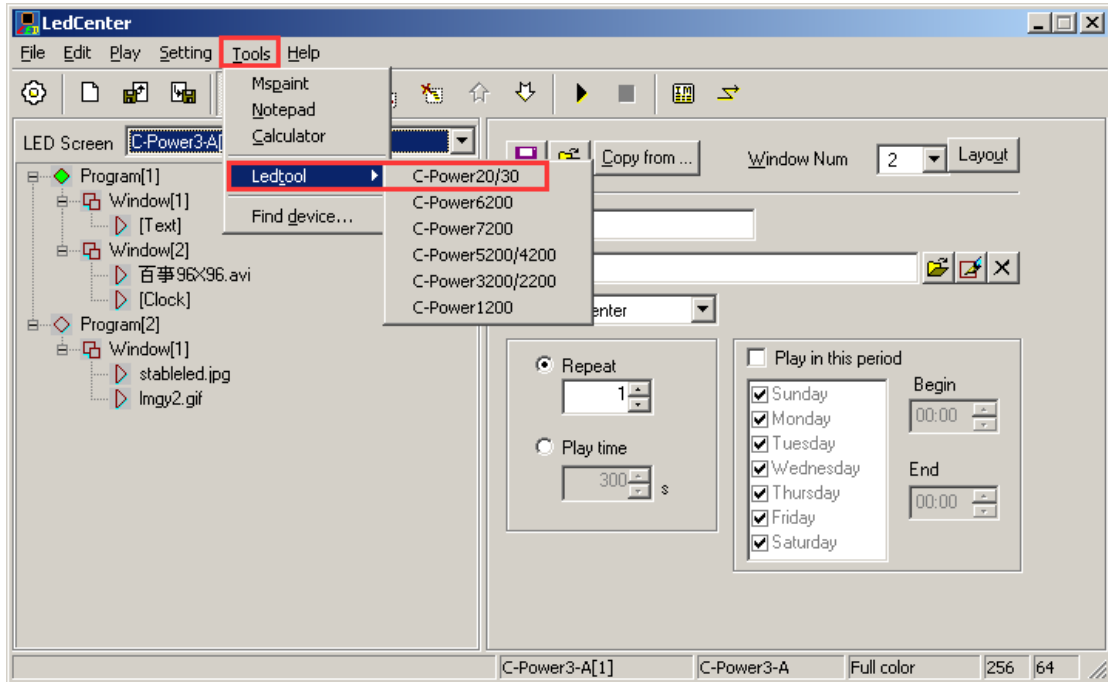



Instruction for C-Power20/30 Ledtool

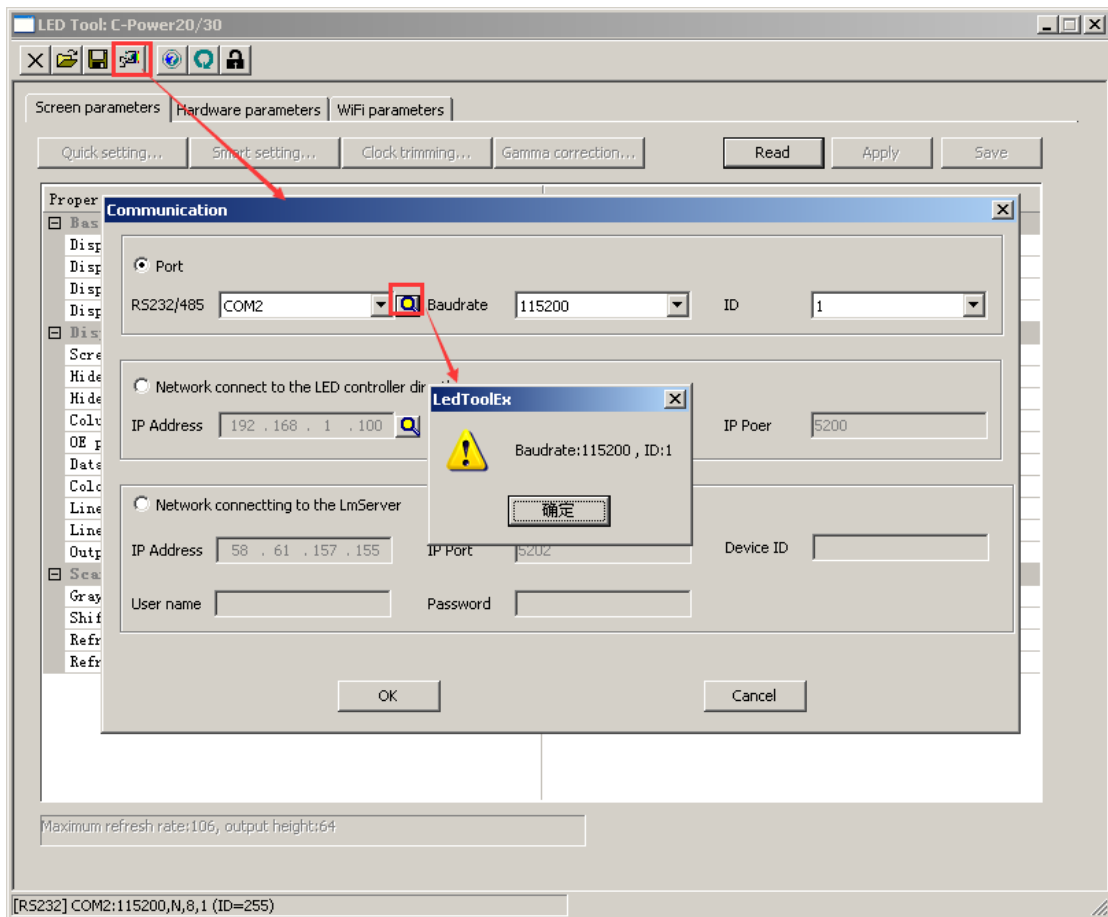
(1) Enter into the “Ledtool” parameters settings interface


Open the software “LedCenterM.exe” of version 5.3.1, find “Tools”—“Ledtool”—“C-Power20/30”, entry the parameter settings interface, as the following picture showed:



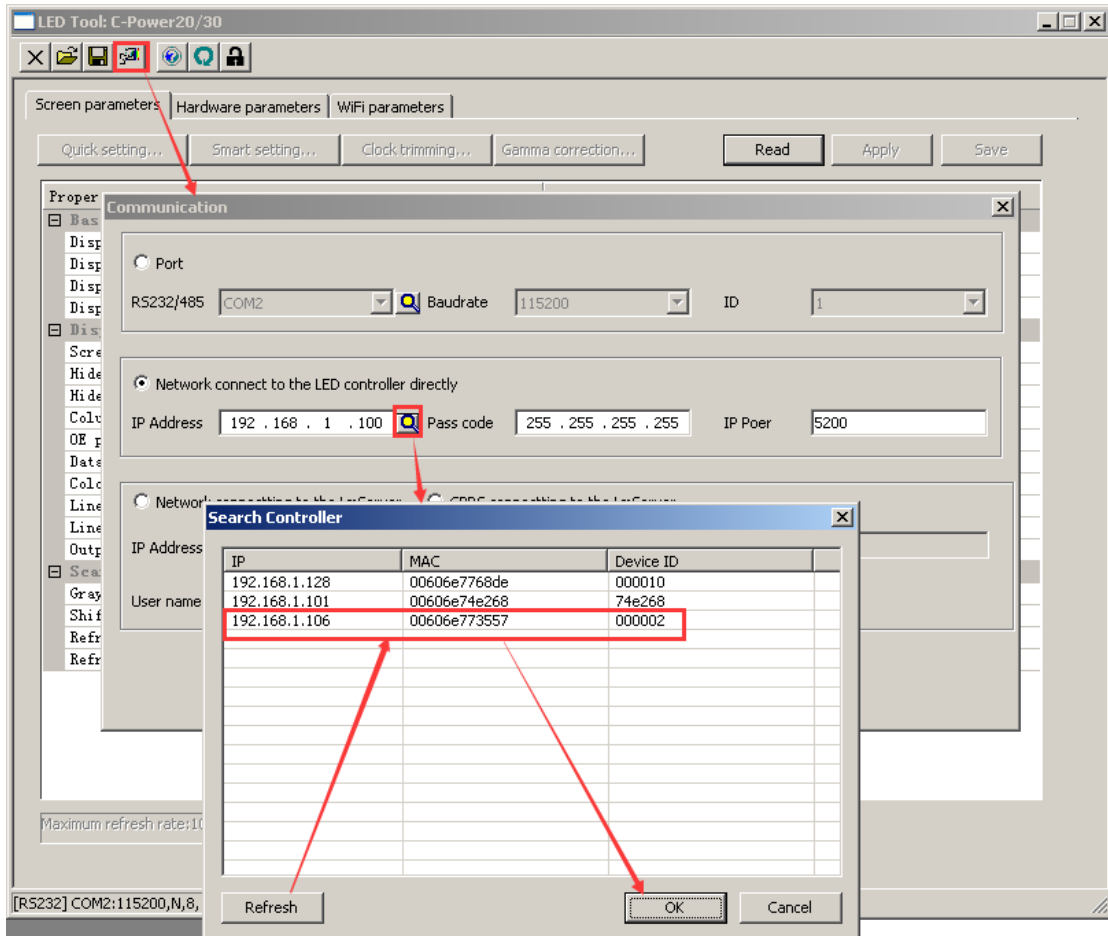
(2) Select the communication mode

1. Serial port communication mode (RS232/485): select your computer’s COM port which is connecting to your controller, click  to auto-detect the controller’s Baudrate and ID, controller’s controllers’ original parameter is : Baud rate is 115200, ID is 1, finish your selection then click “OK”.




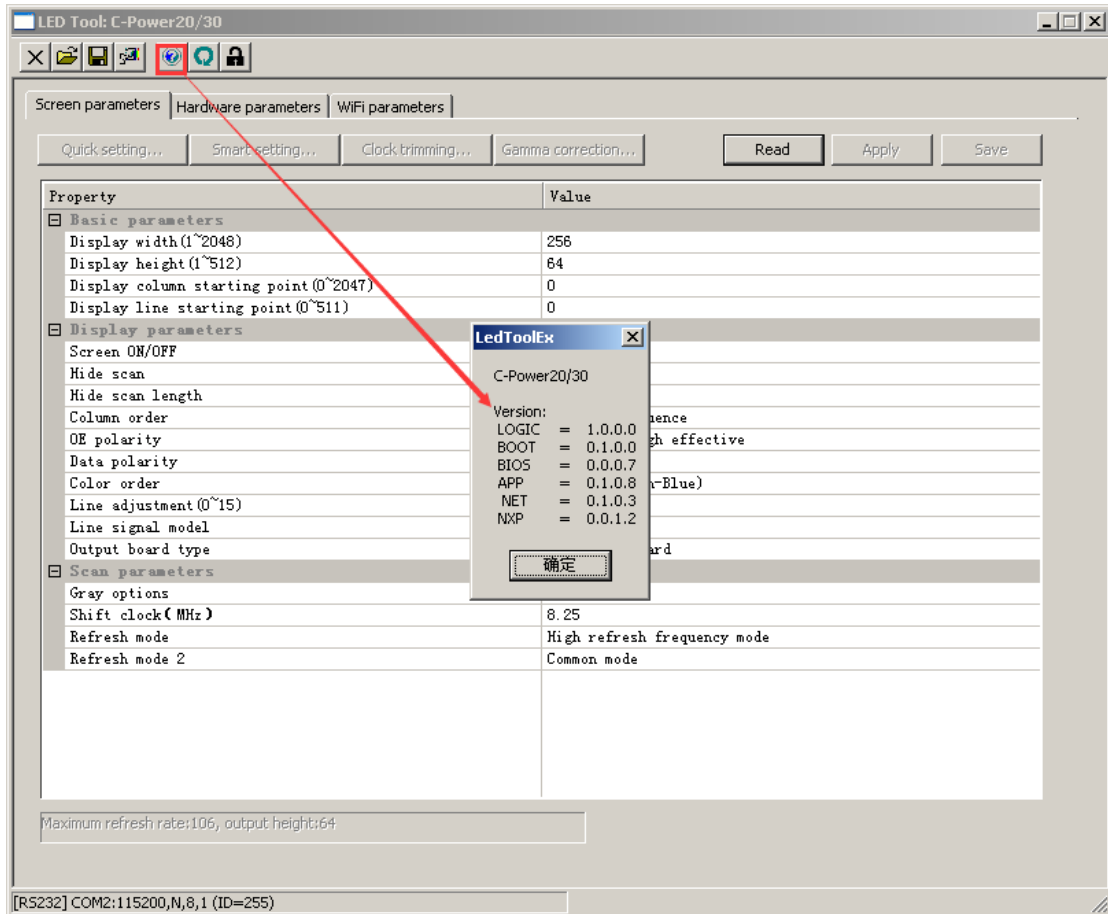
2. Network communication way: select “network”, click the search button , search the controllers connecting on the network, click “refresh”, will see all the controllers connecting on the network. Finish your selection and click “OK”

Controller’s original parameter is: IP Address : 192.168.1.222 , Pass Code : 255.255.255.255, IP Port: 5200



(3) Read the controller's firmware version

After you have selected your communication way, click “Check Version” button , then it will show the controller's firmware version information.

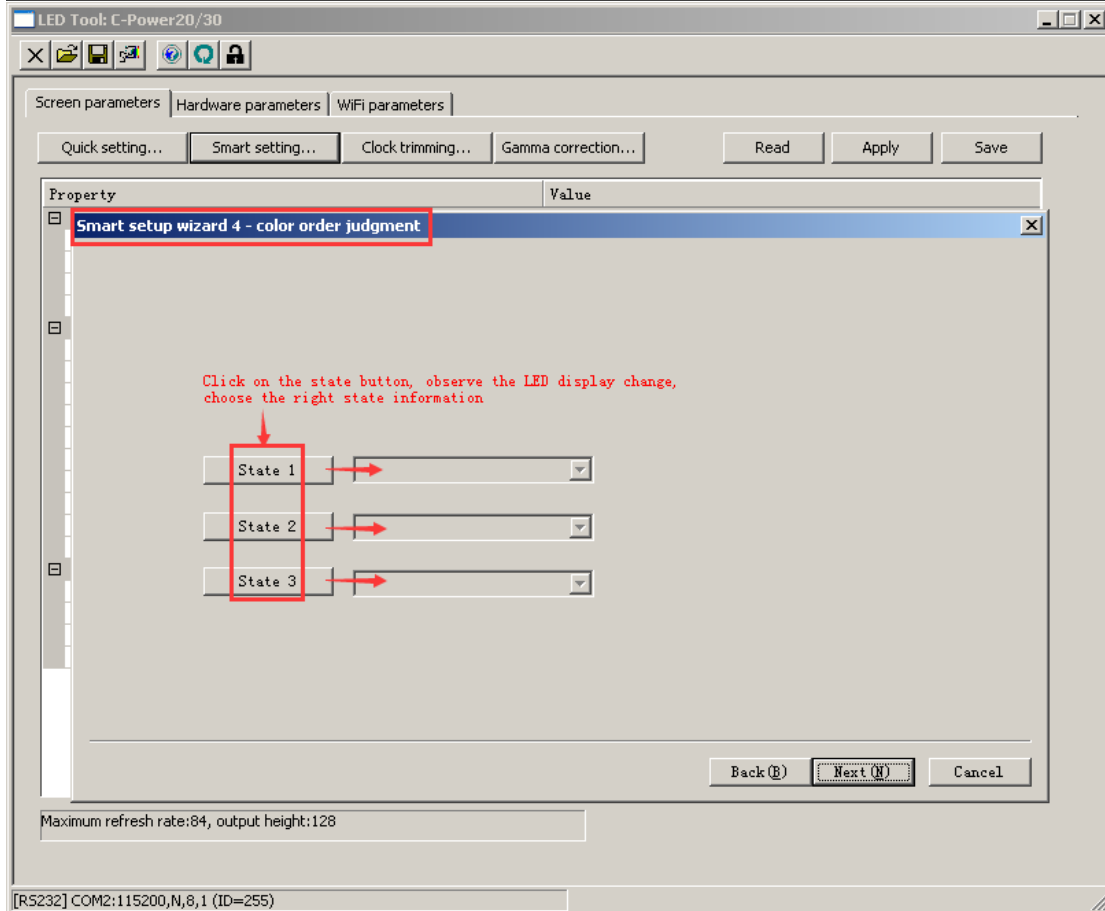
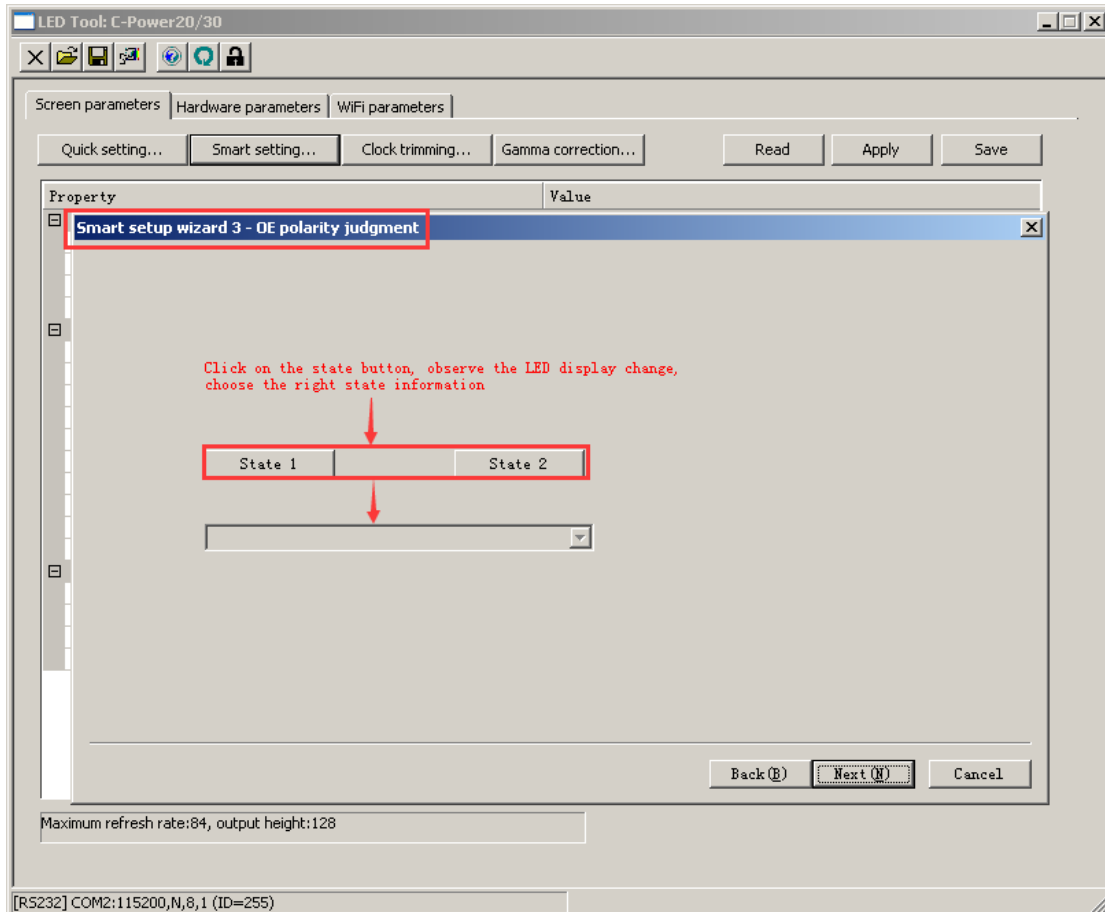


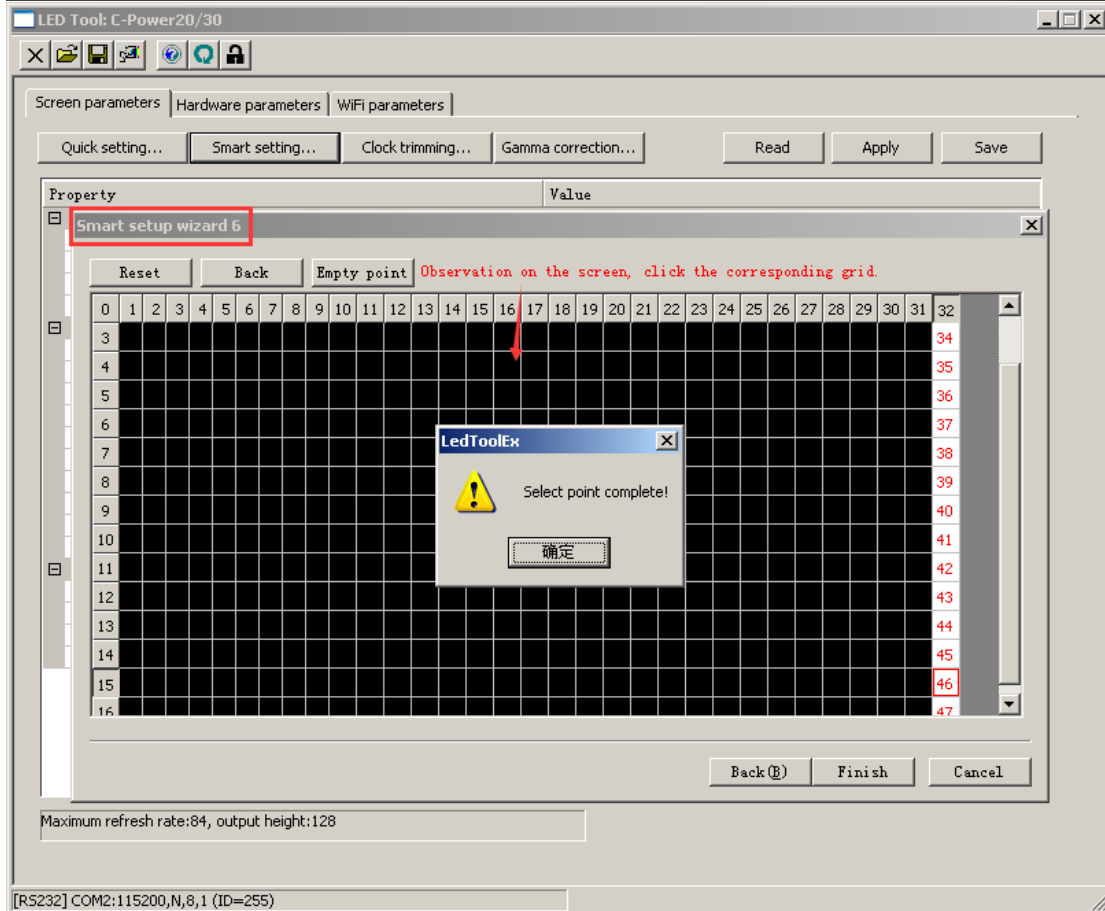
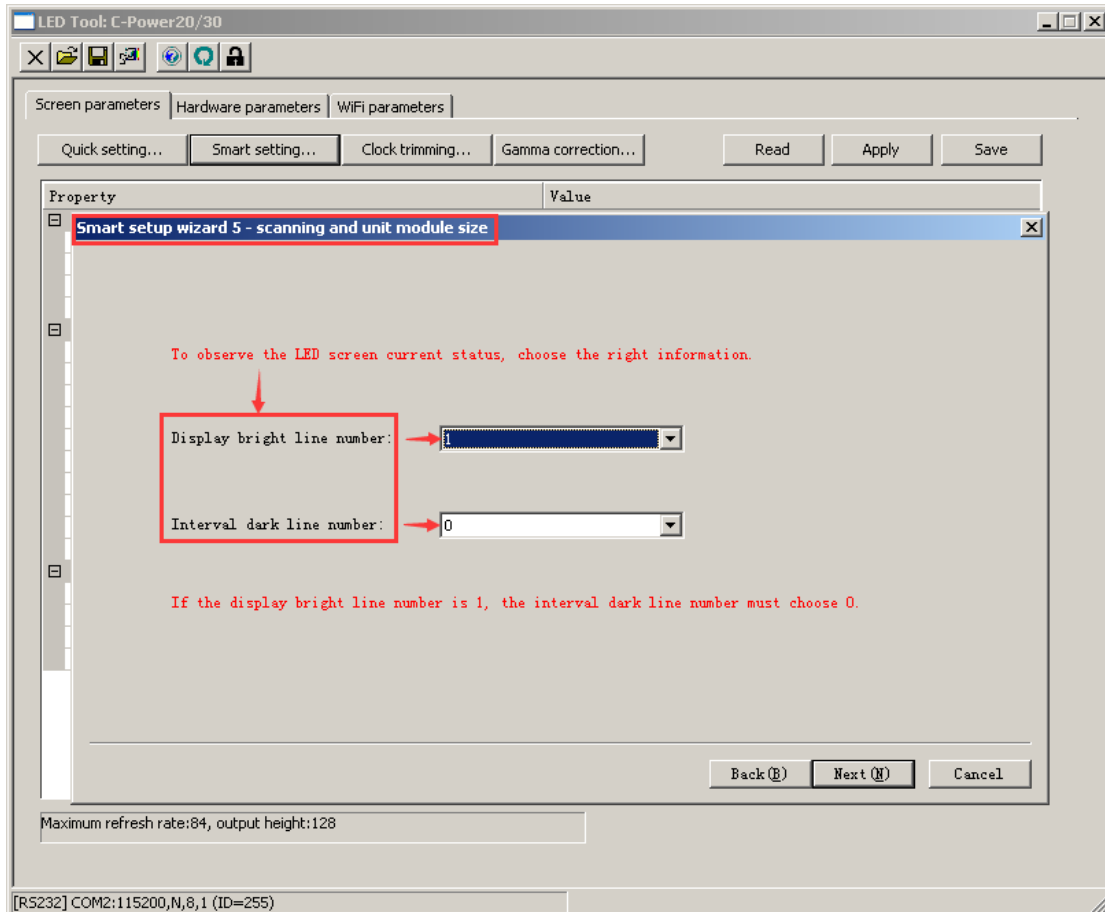
(4) Screen parameters setting

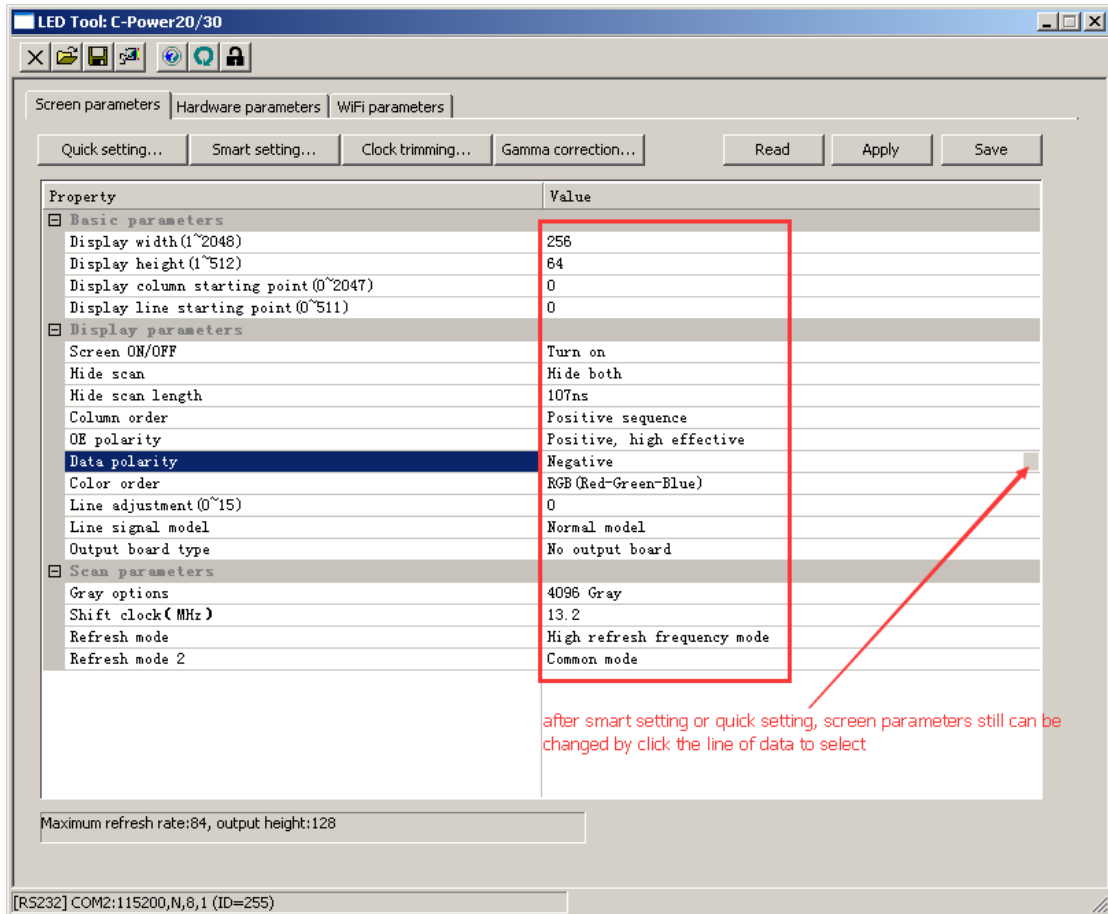
1. before the screen's parameters are able to be reset. It needs to "read" from the controller at first, then click "Advance", Pass code is "26888".

2. Smart setting

Steps as follow picture showed:



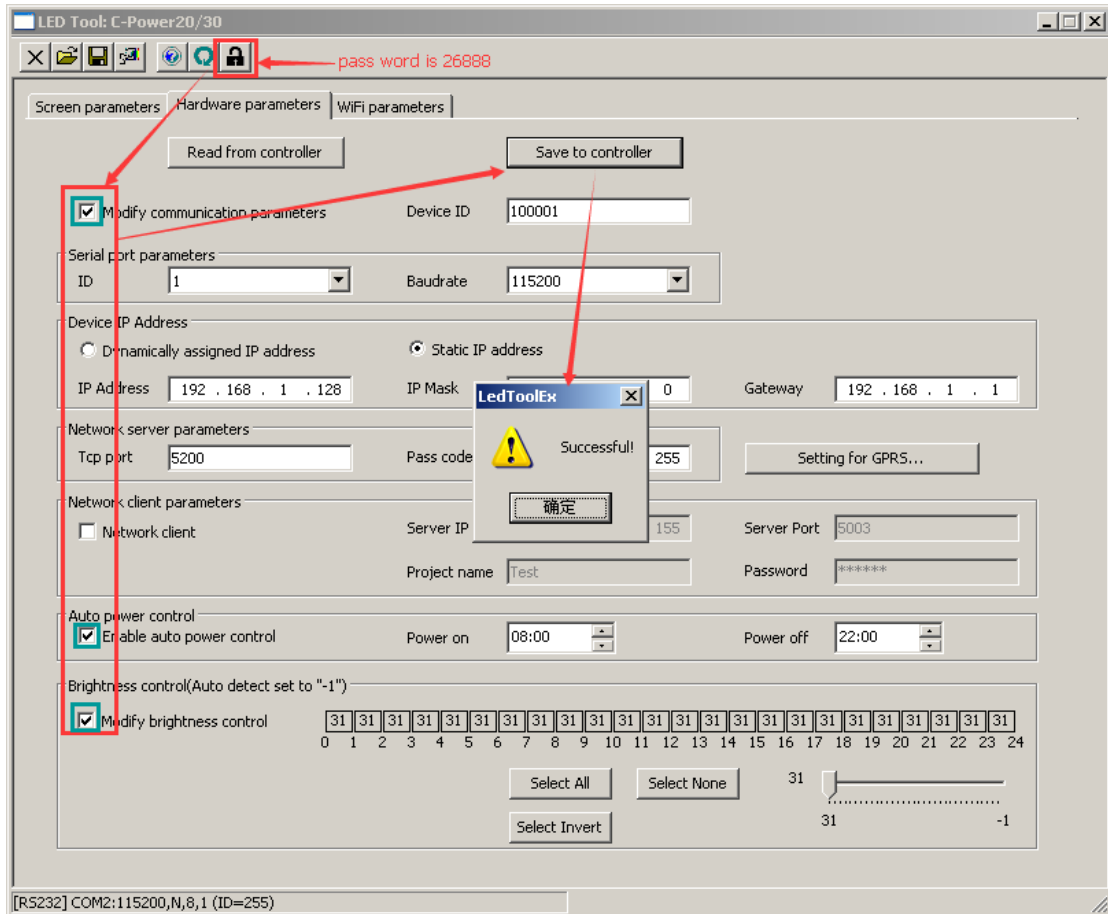




After setting, click “Apply” or “Save”.


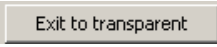
(5) Hardware parameters interface setting

1. Read the hardware parameters from the controller, the controller’s original parameter is: Device ID: lumenchina, Device IP Address is a static IP address: 192.168.1.222, IP Mask: 255.255.255.0, Gateway: 192.168.1.1; as the following picture showed:



(6) WIFI parameters setting

The WIFI card can only use the serial port RS232/485 to communicate.

1. Use RS232 wire connect the com2 of the card, click 
2. Connect the com1 of the card via serial cable, click 
3. Then can read and set the WIFI parameters of the card; as follows:

